

# Sensos Label Gen 2.0

## User Guide



SensosLabz.io  
August 2024

## Legal Notice

This document contains proprietary information regarding the Smart Label and/or any other future products of Sensoslabz.io Ltd. ("Sensos") and is issued for evaluation purposes only. This document may not be photocopied. This document may only be given to those covered by a Confidentiality and Non-Disclosure Agreement with Sensos regarding the Smart Label and/or any other future products of Sensos.

Sensos reserves the right to make corrections, modifications, enhancements, improvements and other changes to its products and services at any time and to discontinue any product or service without notice. Customers should obtain the latest relevant information before placing orders and should verify that such information is current and complete. All products are sold subject to Sensos' terms and conditions of sale supplied at the time of order acknowledgment.

Sensos does not warrant the performance of its hardware and software products except to the specifications applicable at the time of sale in accordance with Sensos' standard warranty. Testing and other quality control techniques are used to the extent Sensos deems necessary to support this warranty. Except where mandated by government requirements, testing of all parameters of each product is not necessarily performed.

Sensos assumes no liability for applications assistance or customer product design. Customers are responsible for their products and applications using Sensos components. To minimize the risks associated with customer products and applications, customers should provide adequate design and operating safeguards.

Sensos does not warrant or represent that any license, either express or implied, is granted under any Sensos' patent right, copyright, mask work right or other Sensos' intellectual property right relating to any combination, machine or process in which Sensos' products or services are used. Information published by Sensos regarding third-party products or services does not constitute a license from Sensos to use such products or services or a warranty or endorsement thereof. Use of such information may require a license from a third party under the patents or other intellectual property of the third party or a license from Sensos under the patents or other intellectual property of Sensos.

Sensos products are not designed, intended or authorized for use as components in systems intended for surgical implant into the body or other applications intended to support life or for any other application in which the failure of the Sensos' product could create a situation where personal injury or death may occur. Should you purchase or use Sensos' products for any such unintended or unauthorized application, you shall indemnify and hold Sensos and its officers, employees, subsidiaries, affiliates and distributors harmless against all claims, cost, damages and expenses and reasonable attorney fees arising out of, directly or indirectly, any claim of personal injury or death associated with such unintended or unauthorized use, even if such claim alleges that Sensos was negligent regarding the design or manufacture of the part.

Reproduction of information in Sensos' data books or datasheets is permissible only if reproduction is without alteration and is accompanied by all associated warranties, conditions, limitations, and notices. Reproduction of this information with alteration is an unfair and deceptive business practice. Sensos is not responsible or liable for such altered documentation.

Resale of Sensos' products or services with statements different from or beyond the parameters stated by Sensos for that product or service voids all express and any implied warranties for the associated Sensos' product or service and is an unfair and deceptive business practice. Sensos is not responsible or liable for any such statements.

## About Sensos

Sensos saves shippers millions of dollars per year by providing a unified, worldwide, realtime view of any shipment or inventory, all in one intuitive interface.

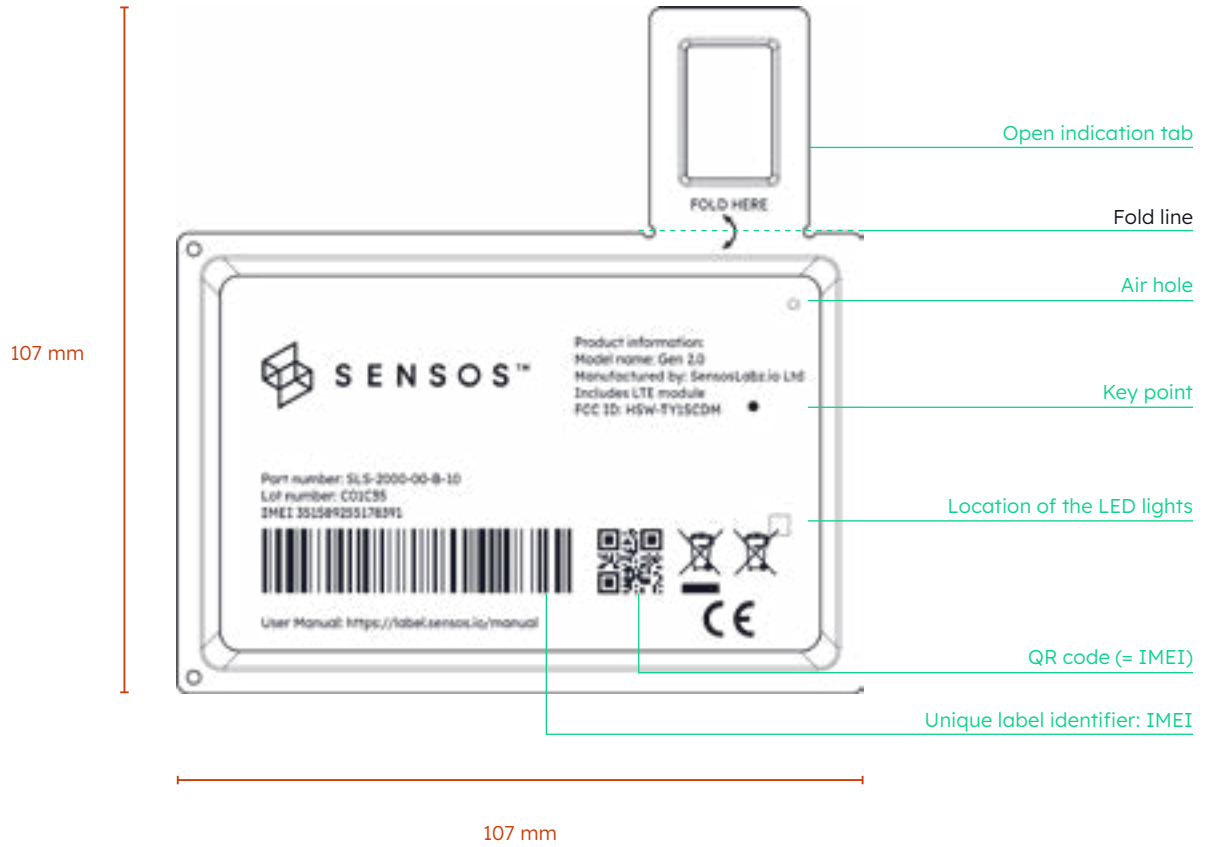
Sensos uses disposable cellular labels to provide parcel-level tracking with an easy-to-use online solution (Sensos Sync) to get quick insights and status in real-time.

Gain supply chain agility with a proactive solution:

- ▶ Save up to 50% on operational overheads
- ▶ Reduce waste by up to 75%
- ▶ Accurately predict shipment arrivals and hold strict SLA's



## Introduction to the Sensos Label Gen 2.0



## Getting Started

### Pairing

You can pair a Sensos label to a shipment by scanning the barcode or manually entering the barcode into your application. The pairing will connect the Sensos label to a specific shipment and its information to generate alerts, shipment information and analytics by your tracking application. The shipment can include additional information such as: shipment duration, shipment content, destination, etc.

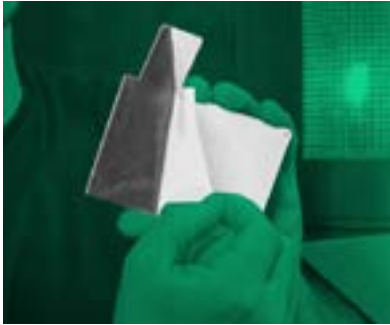
### Activation

Activate the Sensos Label

This will turn on the label and perform a functional test. There are 2 options to activate the Sensos Label:

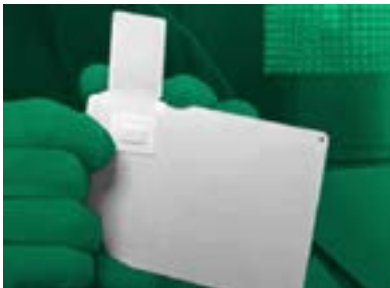
#### ► Activation Option 1

Peel the back-side adhesive by pulling the peel strip at the edge of the label.



#### ► Activation Option 2

If you would like to activate the label in advance, prior to applying it on the box/palette, you can do so by pulling the small rectangular strip on the back of the label.



Several seconds after activation, the LED light will indicate the performance of the functional test:

**BLUE LED** 2 BLUE blinks indicates successful performance and activation

**RED LED** A BLUE blink followed by a RED blink indicates a failure in functional test

## Attachment

### Attachment

Attach the Sensos label to the package by folding it to the box corner of the opening flap along the folding line. It is recommended that the open indication tab is attached perpendicular to the label. Do not rotate the open indication tab.



Note: The box open indication will not function properly if the folding line is vertical to the ground. Make sure to attach the label in a suitable location.



### Monitoring

Use Sensos platform or your preferred tracking application to monitor your shipment.

### Disposal

Remove the Sensos label from the package and dispose according to local regulations.

## Safety and Regulations

### 1. Battery warning:

This product contains batteries that are non-replaceable and non-chargeable. There is a risk of fire and personal injury if battery is punctured, damaged or misused. Use caution when handling sharp objects such as box cutters and scissors near the product.

Do not short circuit, charge or make the anode and the cathode reversed. Do not force-discharge, squeeze, puncture or burn the battery. Do not crush, disassemble, expose contents to water or heat to extreme temperatures or it may lead to explosion, burn or goods leakage.

The battery should be disposed of according to local laws or handed to professional recycle institution.

### 2. Product frequency bands:

<b>Support LTE Band</b>	Low Bands 5,8,12,13,17,18,19,20,26,28   Mid Bands 1,2,3,4,25
<b>Transmit Power</b>	+23dBm max
<b>Power Class</b>	Optimized for Class 3 LTE output power

Stand alone transmitter:

Operating band	Frequency (MHz)	Max conducted average power (dBm)	Antenna gain (dBi)	E Field Strength (V/m)	E Field Strength Limit (V/m)	Result
LTE Cat M1& NB1 Band 1	1920 ~ 1980				60.25	Pass
LTE Cat M1& NB1 Band 3	1710 ~ 1785				56.86	Pass
LTE Cat M1& NB1 Band 8	880 ~ 915	23	3.5	18.30	40.79	Pass
LTE Cat M1& NB1 Band 20	832 ~ 862				39.66	Pass
LTE Cat M1& NB1 Band 28	703 ~ 736				36.46	Pass

Remark 1: The max conducted average power of LTE from module report No.: TESA 2402000087ES what has taken the tuneup into consideration.

Remark 2: Use the higher power between conducted power and EIRP to evaluate the MPE.

## Sensos Support and EU Representative

With any issue with the Sensos label please reach out to Sensos's customer success team at [support@sensos.io](mailto:support@sensos.io) and we will reply as soon as possible based on the agreed SLA in our support contract.

Additional information regarding Sensos' solutions and products, send an email to [sales@sensos.io](mailto:sales@sensos.io)

Sensos EU representative:

Rapid Logistics | Airborne Avenue 87 | Hoofddorp | 2133 LV | The Netherlands

T: +31 -20 653 23 23 | +31-6 513 68 776

E-mail: [vincent@rapidlogistics.nl](mailto:vincent@rapidlogistics.nl) | website: [www.rapidlogistics.nl](http://www.rapidlogistics.nl)